

PAPUA NEW GUINEA

German New Guinea
'Kaiser-Wilhelmsland'

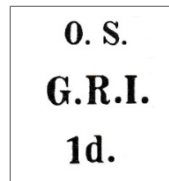
1884-1914



Watermarks & Official Service Overprint



Wmk Lozenges



Type O1

On 3 November 1884 the northern part of New Guinea, then known as Kaiser-Wilhelmsland, came under German commercial control through the formation of the Neuguinea-Kompanie (New Guinea Company). Just days after the south-eastern part of New Guinea was declared a protectorate under the British control, on 1 April 1899 Germany declared the north-eastern section of New Guinea a German protectorate (including the Bismark archipelago, New Pomerania (New Britain), New Mecklenburg (New Ireland), New Hanover, the Admiralty Islands and Northern Solomons). The Solomon Islands was later ceded to Britain (except for Buka and Bouganville which remained under German control) in exchange for renunciation of British claims in Samoa.

The Neuguinea-Kompanie became the administrative centre for the Pacific region which included the German Solomon Islands, Carolines, Palau, the Marianas (excluding Guam) the Marshall Islands and Naru. The territory of Kaiser-Wilhelmsland and the Bismark Archipelago including German Solomon Islands were later referred to as Deutsch-Neu-Guinea.

The main commercial and missionary centres were Friedrich Wilhelmshafen (now Madang) and Alexishafen. Postal agencies were opened at Finschhafen (Feb 1888 – Mar 1891, 1904 onwards), Hatzfeldthafen (Apr 1888 – Sept 1891), Kerawara (Apr 1888 –Jun 1890) using a "Matupi" cancellation Apr-Mar 1888, Konstantinhafen (May 1888 – Sep 1891); Stephansort (from Dec 1889), Herbertshohe (from Jun 1890) used "Kerawara" cancellation Jun –Dec 1890, Friedrich-Wilhelmshafen (from Mar 1892), Matupi (from Nov 1894), and Berlinhafen (from May 1898),

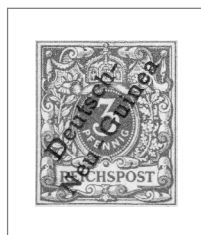
The territories under the German protectorate was later transferred to British and Japanese control after World War I. On Sept 29, 1914, Japanese troops occupied the Marshall Islands atoll of Enewetak, and on Sept 30, 1914 the atoll of Dzhuluit (Jaluit) its' administrative center. At the outbreak of war in 1914 Australian forces took control over the German Pacific Island territories after neutralizing German forces at New Pomerania (New Britain). A quantity of 1901 German Yacht series Marshall Islands and Deutsch-Neu-Guinea stamps were captured on Nauru and Rabaul respectively by Australian forces and overprinted G.R.I. at Rabaul for use in Papua New Guinea. After the war, on June 28, 1919, Germany renounced all of its Pacific possessions, including the Marshall Islands. On December 17, 1920, the Council of the League of Nations approved the mandate for Japan over all former German colonies in the Pacific Ocean, located north of the equator. Japanese control over this region would later be transferred to American control following the defeat of the Japanese in WWII with the achipelago being added to the US Trust Territory of the Pacific Islands, along with several other island groups in the South Sea.

PAPUA NEW GUINEA

German New Guinea

Deutsch Neu-Guinea
1897-1999 Reichspost Overprinted

No Wmk
Perf. 13½ x 14½



1
Bistre-brown



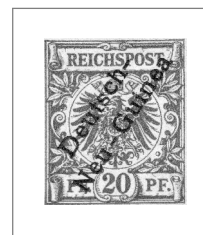
1a
Grey-brown



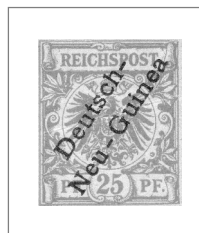
1b
Red-brown



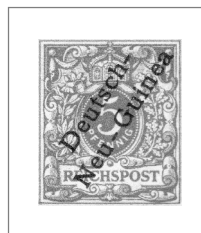
2
Green



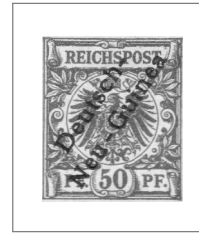
3
Carmine



4
Ultramarine



5
Orange



6
Chocolate

In 1897, the German 1889-1900 series stamps were overprinted 'Deutsch-Neu-Guinea' in black ink by the Imperial Printing Office Berlin. The Emperor Friedrich III stamps (2 to 5 pf) were issued from 9 Mar to 15 Jun 1888, and the Emperor Wilhelm II stamps (10 to 50 pf) issued from 15 Jun 1888 to 9 Nov 1918.

PAPUA NEW GUINEA

German New Guinea

Deutsch-Neu-Guinea

1901 Yacht Hothenzollern

No Wmk

Perf. 14



7
Brown



8
Green



9
Carmine



10
Ultramarine



11
Red-yellow



12
Orange-buff



13
Carmine



14
Purple-buff



15
Carmine-rose



16
Carmine



17
Blue



18
Violet-black



19
Black & Carmine

All existing stamps were replaced in 1900 with the Kaiser Wilhelm II's Yacht Hothenzollern series for all German colonies. These stamps were valid for postage until 21 September 1921. During this period of issue additional post offices were opened until there were 13 post offices operating in the colony by 1914. These were EITAPE (renamed from Berlinhafen), BUKA, DEULON (Alexishafen), KAWIENG, KIETA, MANUS, MARON, MOROBE, NAMATANAI, RABAU (renamed from Simpsonhafen); and older post offices FINSCHHAFEN, HERBERTSHOHE, FRIEDRICH-WILHELMSHAFEN (Madang).

PAPUA NEW GUINEA

German New Guinea

1900-1914 Deutsch-Neu-Guinea

G.R.I. Overprint

No Wmk

Perf. 14

(5 mm spacing 'GRI' and 'd'.)



16
(1,280)



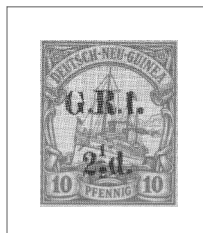
17
(4,558)



18
(5,290)



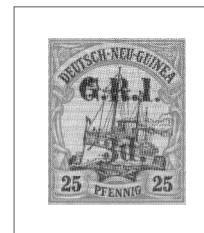
19
(5,397)



20
(1,675)



21
(1,445)



22
(309)



23
(347)



24
(737)



25
(282)



26
(328)

The German colony was captured by Australian forces at the outbreak of WWI in 1914. Captured stocks of the 1900 Yacht series were overprinted G.R.I. (George Rex Imperator) on a small platen press at a mission school room in Rabaul. Additional stocks were later discovered at Kavieng and overprinted but with variations in spacing between "GRI" and the top of the 'd' letter for the value 'pence' measuring either 5 - 5 1/2 mm, or 6mm. The figure expressed in the (brackets) is the total quantity of this value overprinted regardless of spacings.